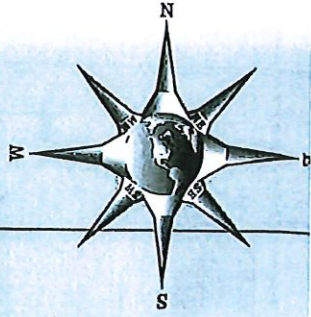


PROPOSED BOUNDARIES 12-13-2021

PRISON



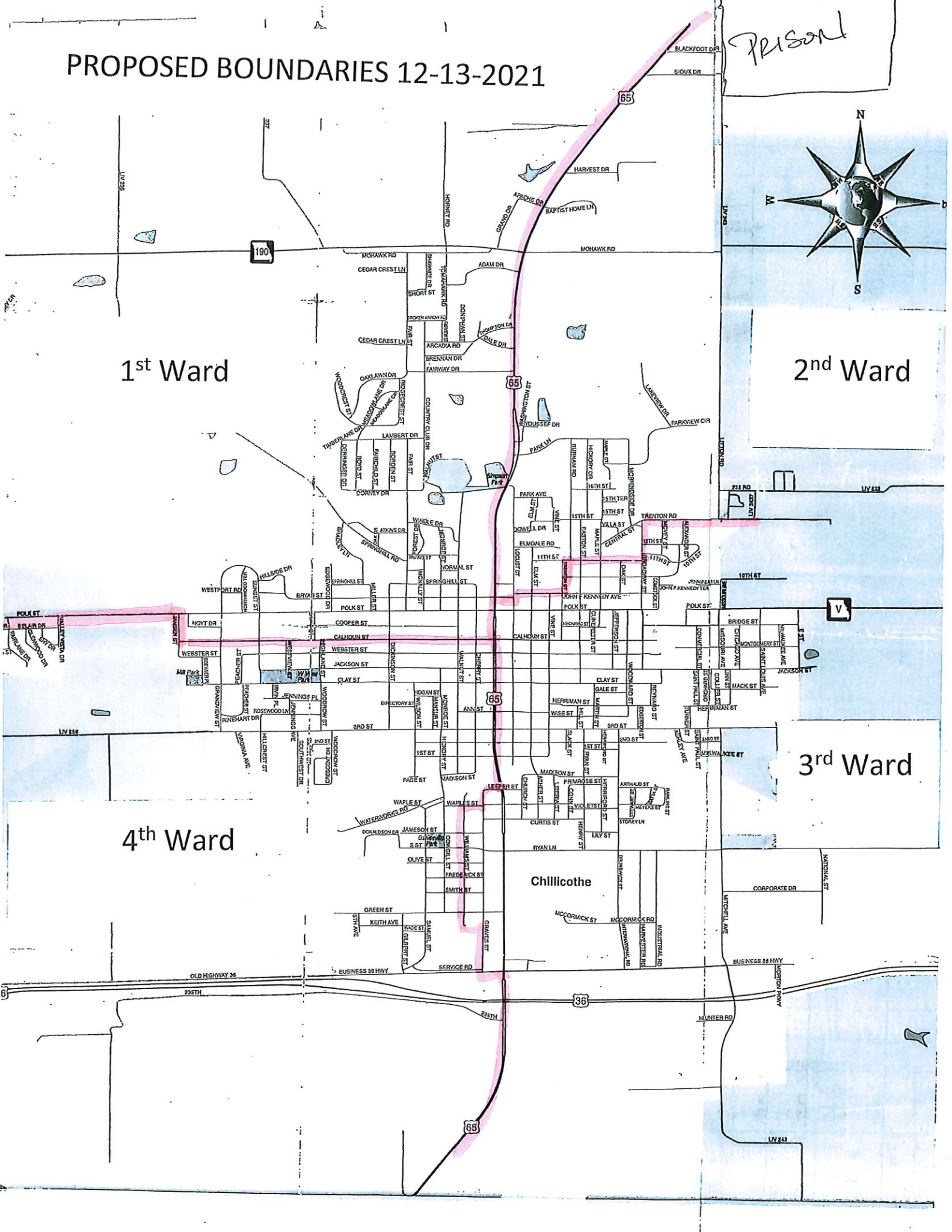
1st Ward

2nd Ward

3rd Ward

4th Ward

Chillicothe



LIV 295

LIV 297

190

65

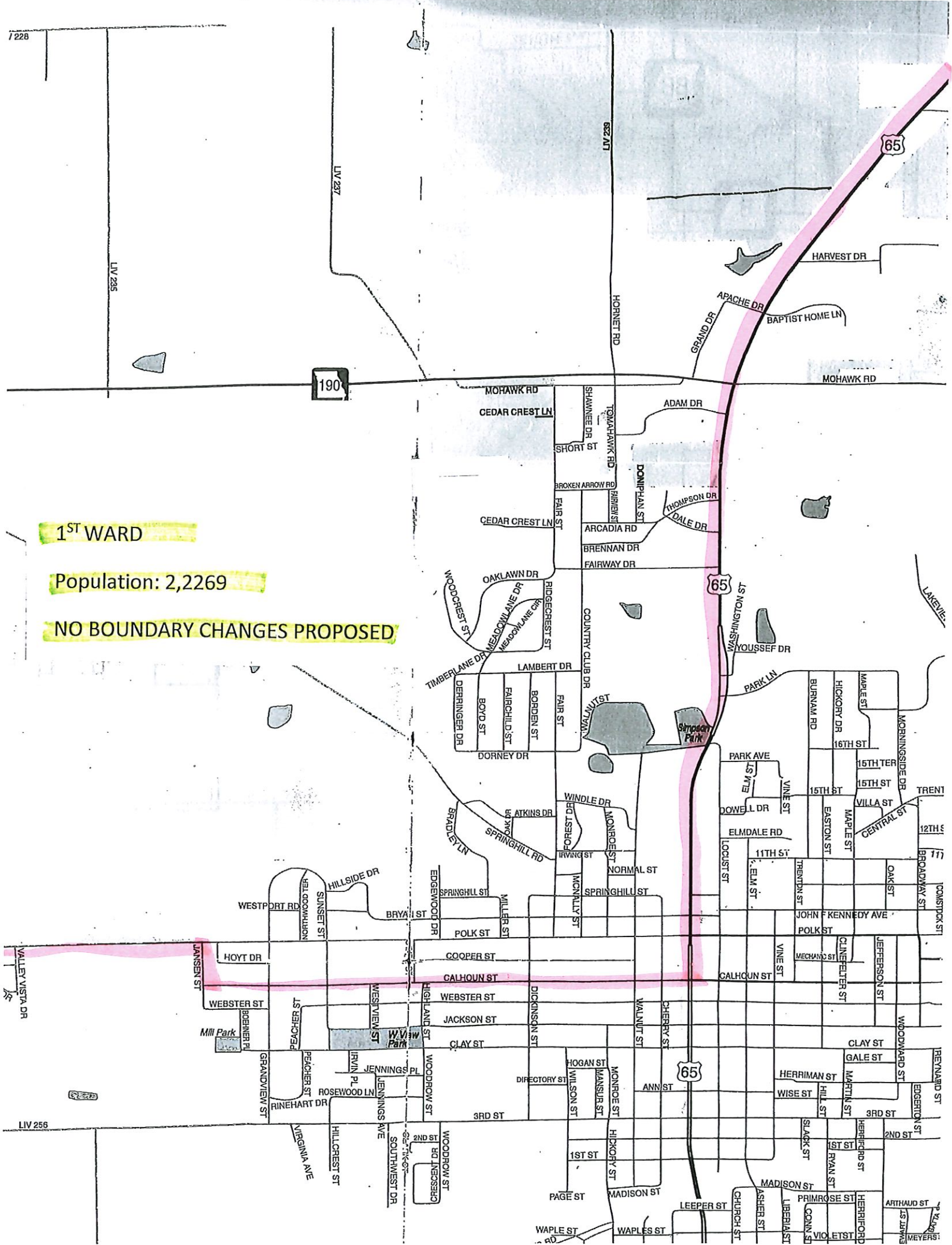
65

65

1ST WARD

Population: 2,2269

NO BOUNDARY CHANGES PROPOSED



LIV 256

LAKEVIEW

117

117

117

117

117

117

117

117

117

117

117

117

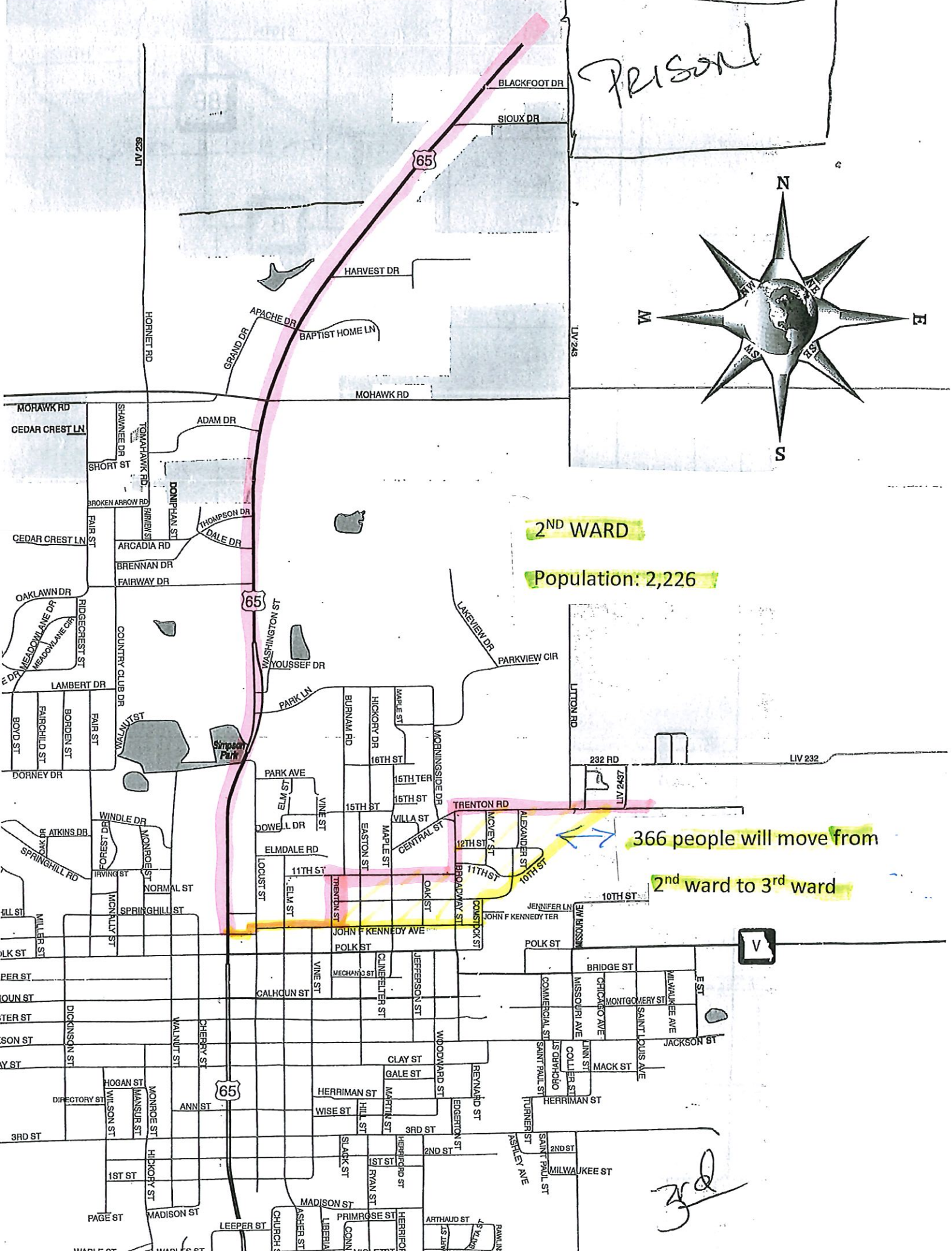
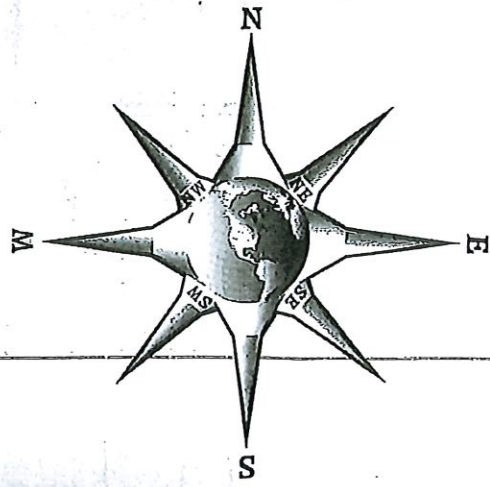
117

117

117

117

PRISON



2ND WARD

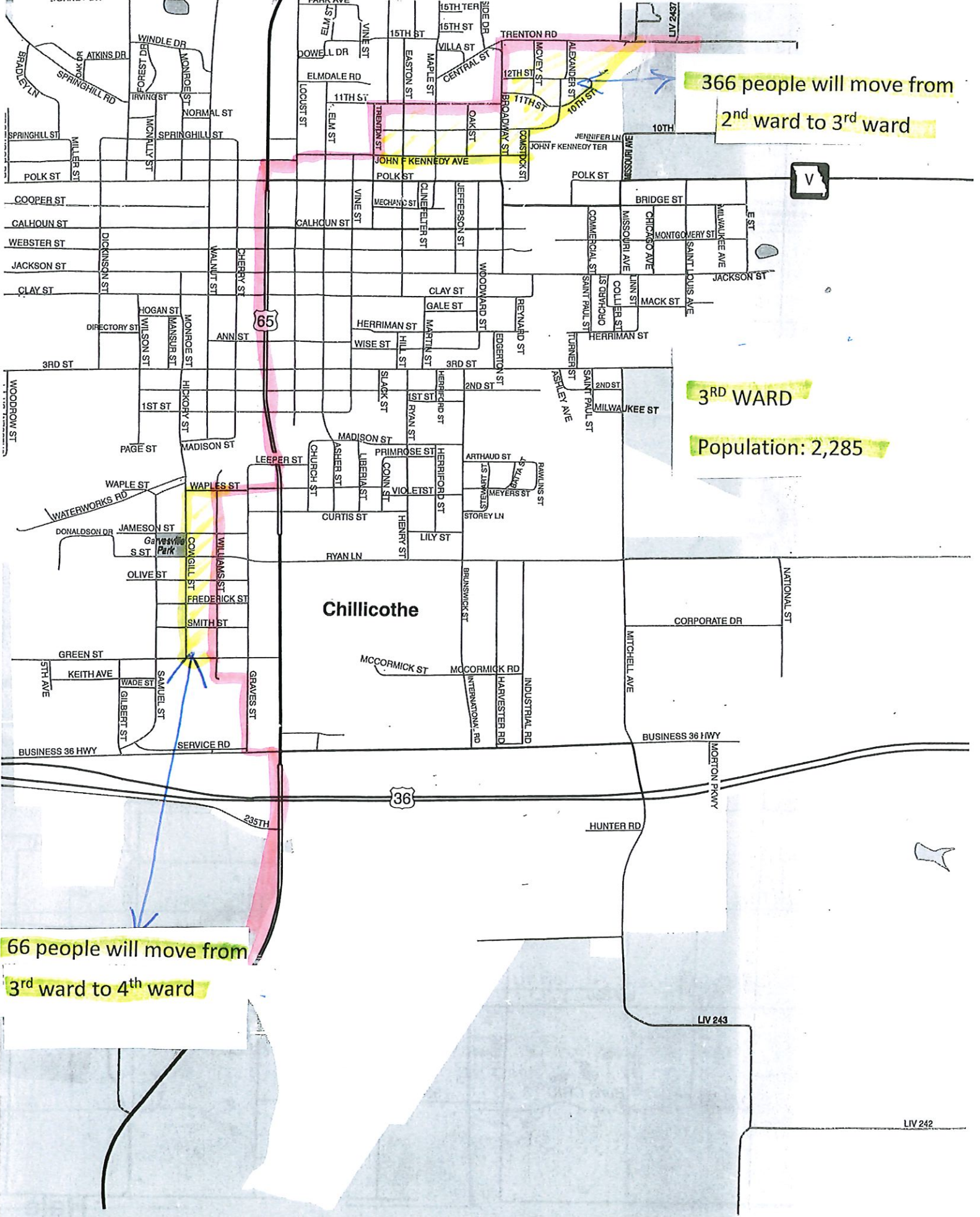
Population: 2,226

366 people will move from

2nd ward to 3rd ward

V

3rd



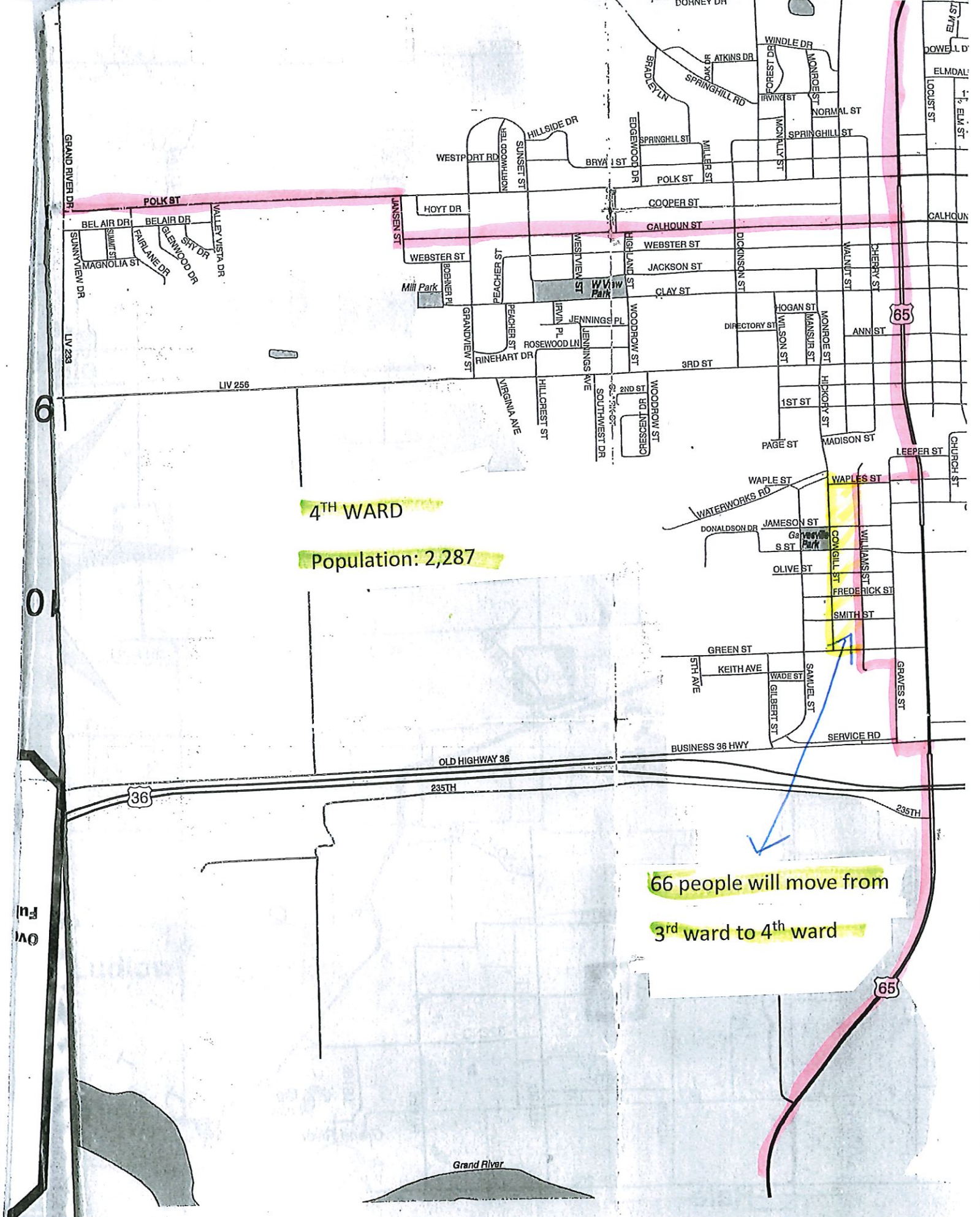
366 people will move from 2nd ward to 3rd ward

3RD WARD

Population: 2,285

Chillicothe

66 people will move from 3rd ward to 4th ward



4TH WARD

Population: 2,287

66 people will move from
3rd ward to 4th ward

A

B

C

I

Full
Over

Grand River

36

235TH

OLD HIGHWAY 36

BUSINESS 36 HWY

235TH

65

65

GRAND RIVER DR

LIV 233

LIV 256

WESTPORT RD

HILLSIDE DR

BRYAN ST

EDGEMOOD DR

POLK ST

COOPER ST

WEBSTER ST

JACKSON ST

CLAY ST

WOODROW ST

3RD ST

WOODROW ST

2ND ST

CRESCENT DR

WOODROW ST

WOODROW ST

WOODROW ST

WOODROW ST

WOODROW ST

WOODROW ST

WOODROW ST

WOODROW ST

WOODROW ST

WOODROW ST

WOODROW ST

WOODROW ST

WOODROW ST

WOODROW ST

WOODROW ST

WINDLE DR

FOREST DR

IRVING ST

SPRINGHILL ST

SPRINGHILL ST

SPRINGHILL ST

SPRINGHILL ST

SPRINGHILL ST

SPRINGHILL ST

SPRINGHILL ST

SPRINGHILL ST

SPRINGHILL ST

SPRINGHILL ST

SPRINGHILL ST

SPRINGHILL ST

SPRINGHILL ST

SPRINGHILL ST

SPRINGHILL ST

SPRINGHILL ST

SPRINGHILL ST

SPRINGHILL ST

SPRINGHILL ST

SPRINGHILL ST

SPRINGHILL ST

SPRINGHILL ST

MONROE ST

NORMAL ST

SPRINGHILL ST

SPRINGHILL ST

SPRINGHILL ST

SPRINGHILL ST

SPRINGHILL ST

SPRINGHILL ST

SPRINGHILL ST

SPRINGHILL ST

SPRINGHILL ST

SPRINGHILL ST

SPRINGHILL ST

SPRINGHILL ST

SPRINGHILL ST

SPRINGHILL ST

SPRINGHILL ST

SPRINGHILL ST

SPRINGHILL ST

SPRINGHILL ST

SPRINGHILL ST

SPRINGHILL ST

SPRINGHILL ST

SPRINGHILL ST

SPRINGHILL ST

ELMDAL

LOCUST ST

ELM ST

ELM ST

ELM ST

ELM ST

ELM ST

ELM ST

ELM ST

ELM ST

ELM ST

ELM ST

ELM ST

ELM ST

ELM ST

ELM ST

ELM ST

ELM ST

ELM ST

ELM ST

ELM ST

ELM ST

ELM ST

ELM ST

ELM ST

HOYT DR

WEBSTER ST

ROBENNER PL

GRANDVIEW ST

ROSEWOOD LN

ROSEWOOD LN

ROSEWOOD LN

ROSEWOOD LN

ROSEWOOD LN

ROSEWOOD LN

ROSEWOOD LN

ROSEWOOD LN

ROSEWOOD LN

ROSEWOOD LN

ROSEWOOD LN

ROSEWOOD LN

ROSEWOOD LN

ROSEWOOD LN

ROSEWOOD LN

ROSEWOOD LN

ROSEWOOD LN

ROSEWOOD LN

PEACHER ST

PEACHER ST

PEACHER ST

PEACHER ST

PEACHER ST

PEACHER ST

PEACHER ST

PEACHER ST

PEACHER ST

PEACHER ST

PEACHER ST

PEACHER ST

PEACHER ST

PEACHER ST

PEACHER ST

PEACHER ST

PEACHER ST

PEACHER ST

PEACHER ST

PEACHER ST

PEACHER ST

WESTVIEW ST

WESTVIEW ST

WESTVIEW ST

WESTVIEW ST

WESTVIEW ST

WESTVIEW ST

WESTVIEW ST

WESTVIEW ST

WESTVIEW ST

WESTVIEW ST

WESTVIEW ST

WESTVIEW ST

WESTVIEW ST

WESTVIEW ST

WESTVIEW ST

WESTVIEW ST

WESTVIEW ST

WESTVIEW ST

WESTVIEW ST

WESTVIEW ST

WESTVIEW ST

HIGHLAND ST

HIGHLAND ST

HIGHLAND ST

HIGHLAND ST

HIGHLAND ST

HIGHLAND ST

HIGHLAND ST

HIGHLAND ST

HIGHLAND ST

HIGHLAND ST

HIGHLAND ST

HIGHLAND ST

HIGHLAND ST

HIGHLAND ST

HIGHLAND ST

HIGHLAND ST

HIGHLAND ST

HIGHLAND ST

HIGHLAND ST

HIGHLAND ST

HIGHLAND ST

WILSON ST

WILSON ST

WILSON ST

WILSON ST

WILSON ST

WILSON ST

WILSON ST

WILSON ST

WILSON ST

WILSON ST

WILSON ST

WILSON ST

WILSON ST

WILSON ST

WILSON ST

WILSON ST

WILSON ST

WILSON ST

WILSON ST

WILSON ST

WILSON ST

MONROE ST

MONROE ST

MONROE ST

MONROE ST

MONROE ST

MONROE ST

MONROE ST

MONROE ST

MONROE ST

MONROE ST

MONROE ST

MONROE ST

MONROE ST

MONROE ST

MONROE ST

MONROE ST

MONROE ST

MONROE ST

MONROE ST

MONROE ST

MONROE ST

ANN ST

ANN ST

ANN ST

ANN ST

ANN ST

ANN ST

ANN ST

ANN ST

ANN ST

ANN ST

ANN ST

ANN ST

ANN ST

ANN ST

ANN ST

ANN ST

ANN ST

ANN ST

ANN ST

ANN ST

ANN ST

WALNUT ST

WALNUT ST

WALNUT ST

WALNUT ST

WALNUT ST

WALNUT ST

WALNUT ST

WALNUT ST

WALNUT ST

WALNUT ST

WALNUT ST

WALNUT ST

WALNUT ST

WALNUT ST

WALNUT ST

WALNUT ST

WALNUT ST

WALNUT ST

WALNUT ST

WALNUT ST

WALNUT ST

CHERRY ST

CHERRY ST

CHERRY ST

CHERRY ST

CHERRY ST

CHERRY ST

CHERRY ST

CHERRY ST

CHERRY ST

CHERRY ST